



BRACES & INVISALIGN
for adults, kids & teens



SERVING SAN CARLOS & REDWOOD SHORES
1785 San Carlos Ave #7
San Carlos, CA 94070
650.592.3111

WWW.DRTAVAREZ.COM
make your appointment today!



ORACLE DONATES AN ADDITIONAL \$100,000 TO SCHOOL DISTRICT

Oracle Corporation has recently awarded a \$100,000 grant over two years to the Belmont-Redwood Shores School District. This grant will be used to staff the Electronic Arts Learning Center so it is available to all parents and students after school and evenings over the next two years.

The Learning Center, built through the generosity of Electronic Arts and equipped through a technology grant from Oracle, is located at the Nesbit Elementary School campus. It features an extensive computer lab, which will now be available for homework and other community educational opportunities. "We are so grateful for Oracle's support of this extended use of our Learning Center. We have dreamed of hav-

ing it available during after-school and evening hours, but have not had the funding for this until now," says Cherie Ho, principal of Nesbit Elementary. "We envision this facility being busy during all its open hours, which will be from 3:00-9:00pm at least four days a week."

Oracle has an established history of supporting a variety of needs within our district. Since 1997, their annual donations to the Belmont-Redwood Shores School District have now totaled over \$375,000.

Previous donations have been used to fund technology upgrades

throughout the district, science equipment at Ralston Middle School, Junior Achievement at Central School, and last year, an English Language Learners Program at Nesbit. We are very grateful to Oracle for this ongoing partnership with our schools.

CONVENIENCE • QUALITY • PROTECTION

At Sovereign Motor Group, we protect your investment and maximize your driving experience by restoring and maintaining your vehicle to showroom condition.

All services are performed at the convenience of your home or business. If you prefer, we will pick-up and deliver your car.

Sovereign Motor Group

Mobile Auto Detailing Service
650-771-6360
 Inquire about our multi car discount

STANDARD SERVICES INCLUDE:

- Full Service Hand Car Wash
 - Wax and buff paint to a high shine
 - Polish exterior chrome
 - Dress exterior and interior rubber, plastic & vinyl
 - Shampoo carpets, floor mats & upholstered seats
 - Clean dash, center console, visors & door panels
 - Apply leather conditioner to seats, dash & door panels (as applicable)
 - Clean engine compartment & wheel wells... and much more!
- Ask about custom detailing packages.

©2006 RSVF Publications. All Rights Reserved. SM706

REDWOOD CITY'S DOWNTOWN HONORED

Redwood City's new downtown is being honored by the Congress for the New Urbanism. The Redwood City project is one of 20 professional and five academic projects selected out of a field of more than 130 submissions from around the world. Projects that best embody and advance the principles of the Charter of the New Urbanism are honored and set the gold standard for urban design and development.

Congratulations to all of us for doing it right! *Taken From Edcetera*





www.EmilyLim.com

(650) 637-1100



BEAUTIFUL, SUNNY WATERFRONT
on a great location. New granite counter.
2 bedrooms / 2.5 baths SP: \$680,000



RE/MAX USA Top 20
SAMCAR Platinum
School Force Preferred Realtor



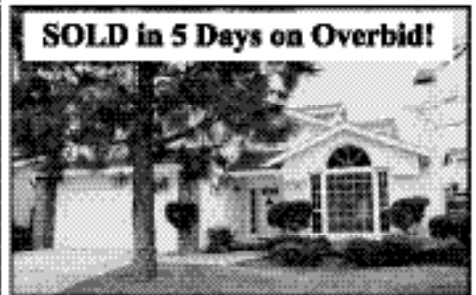
GORGEOUS WATERFRONT HOME !
Sall from your backyard. Bright & open
4 bedrooms / 3 baths LP: \$1,288,000



LOVELY HOME IN GOSSAMER
COVE—like new! 3 bedrooms /
2.5 baths LP: \$1,098,000



ALDEN PARK! Walk to Sea Cloud Park.
Bahama — 3 bedrooms + den / 2.5 baths
LP: \$1,248,000



LOVELY, SPACIOUS HOME!
Sea Chase— 4 bedrooms / 3 baths
LP: \$1,278,000

WE *live...*
WE *work...*
WE *lend...*
IN REDWOOD
Shores

HERBERT & DECONTRERAS

Call Us for All Your Financing Needs **650.401.4060**



ROB DECONTRERAS
SENIOR LOAN CONSULTANT
rob.decontreras@wamu.net

STEVE HERBERT
SENIOR LOAN CONSULTANT
steve.herbert@wamu.net



www.HERBERTLENDING.com • 487 A SOUTH EL CAMINO REAL • SAN MATEO, CA 94402

Se habla español

Certain restrictions and conditions apply. Programs subject to change. Multiple Product Claims: Some programs may not be combined with others. Washington Mutual has loan offices and accepts loan applications in: Washington Mutual Bank - many states; Washington Mutual Bank, doing business as Washington Mutual Bank, FL - many states; and Washington Mutual Bank fdb - ID, MT, UT.



NSSAC UPDATE *Submitted by Bonnie Wolf*

The Belmont-Redwood Shores School Board has announced their selection of the architectural firm of Stafford King Wiese Architects (SKW) to design the new elementary school in Redwood Shores.

“The New Shores School Advisory Committee (NSSAC) and the District were fortunate to have several outstanding firms submit an RFQ/P (Request for Qualifications/Proposals) for consideration,” stated Superintendent Nellie Hungerford. “The Board spent considerable time reviewing presentation materials and documents supporting the expertise and experience of four top firms, each highly regarded by NSSAC. Ultimately, the Board concluded that Stafford King and Wiese could best serve the needs of the District.”

Based in Sacramento, SKW has provided architectural services to over 35 school districts in the past ten years, including the San Carlos School District where the firm worked on additions and modernizations to five elementary schools as well as a middle school.

Our approach to projects is to provide sound design and functional planning within the given budget and time constraints. To accomplish these goals we practice three basic standards: develop clear expectations, be accountable and do it right the first time,” Kip Grubb, the firm’s representative, told NSSAC at a presentation held in February.

Mr. Grubb noted that Area H, the proposed new school site in Redwood Shores, has a good solar orientation which would enhance the use of natural light. SKW’s presentation emphasized incorporating the landscape into the architecture by providing outdoor gathering areas and positioning buildings to be open to the beauty of the restored wetlands.

In other new school news, Mrs. Hungerford reported to the NSSAC at the March 8th meeting that \$52,263.75 has thus far been spent for consultants regarding land selection and guiding the District through the required State land acquisition process and due diligence testing of the proposed school site. To date, bills have been paid using other District funds that will require reimbursement when the Measure C bond proceeds become available.



Project timelines were provided to NSSAC with a best case school opening scenario projected for September 2009 and a worse case school opening scenario projected for September 2011. According to the School District’s construction consultant Doug Williams, who is with Blach Construction Company, the school project is currently on track with the best case scenario.

Finally, a preliminary budget for the school project was presented by Mr. Williams. The budget estimated building costs at approximately \$19,450,000 including escalation costs of 12%, a construction contingency of \$860,000 and a miscellaneous owner’s contingency of \$300,000. However, Mr. Williams stated that the budget was extremely preliminary, given that no details regarding design, configuration or construction have been determined.

GID UPDATE ON AREA H

The General Improvement District 1-64 Facilities Fee Management Committee met on March 21 at City Hall. The finances since the last meeting in October were reviewed without significant comment. There is a little more than one million dollars in uncommitted funds. Max Keech gave an update on the development of Area H. The only hang up on the development of the project is the continued mitigation on fish and wildlife issues. Max expects these issues to be resolved by July, 2007 and permits to be granted by the end of the year. If all goes well there is still a chance for the new elementary school to open by the fall of 2009. According to Max if we miss that opening it will be because of failure of the Fish and Wildlife people to move quickly or the California State Architect to approve school plans in a timely fashion.

Max reported that negotiations are proceeding with the school district on the purchase of the seven acres needed for the school in a healthy fashion. A completed letter of intent is expected by the end of April. A subcommittee to make recommendations for priorities for the remaining funds was appointed : Max Keech, Pete Hughes, and Chu Chang make up the subcommittee. They will submit their recommendations at the next meeting of the management committee which will be April 18 at 10 am at city hall. One item of priority mentioned already is the installation of a new pump near the new library because gravity feed no longer is adequate. The new pumping station will cost about one half million dollars.

Pete Hughes, RSCA GID representative.



Steve Ficklin

Buying or selling your home?
Call Us today!

REALTOR, CRS, R. E. BROKER
650-598-8183



Virtual Tours www.maryficklin.com



Mary Ficklin



**CHULA VISTA DR.,
BELMONT 3,000 sq/ft**
Contemporary in the foothills of Belmont 4 bdrm., 2.5 ba, vaulted ceilings with open floor plan 16,000 sq/ft lot terraced and usable with fruit trees & gardens.
Offered at \$1,499,000



217 O'CONNOR ST., MENLO PARK
Tuscan Style Home, 4/5 bdrms, 3.5 ba. 5th bdrm. could be office, den or nursery. New 3,300 sq. ft. 2 car garage, teakwood floors, arched windows, natural stone/marble throughout 8' French Doors, knotty Alder solid doors, chef's kitchen, great open floor plan w/ high ceilings, three fireplaces. 9,000 sq/ft level fenced lot. Great M.P. Schools
Offered at \$2,345,000



**COMING IN APRIL
REDWOOD SHORES
CORK HARBOUR CIRCLE**
2 bd/2 ba 1st floor condo.
Updated kitchen w/granite counters new neutral color carpets, great location on wide lagoon water, walking distance to new "Redwood Shores Library". Pls. call for more details.

 **Palo Alto Medical
Foundation**
A Sutter Health Affiliate
With You. For Life.

Community Based, Not For Profit

Redwood Shores Health Center

Same Day Appointments Available
Extended Hours • 7 a.m. to 6 p.m. Weekdays
9 a.m. to 4 p.m. Saturdays

Located in the Marketplace across from Nob Hill
290 Redwood Shores Parkway, Redwood City

- Physicians in Internal Medicine, Family Practice, Pediatrics, Dermatology and Allergy
- On-Site Laboratory including Mammography
- PAMFOnline – E-health services



Medical Staff of the Redwood Shores Health Center

Contact us at (650) 598-3160 or visit our Web site at www.pamf.org



SCION 101



TOYOTA 101

WE'VE CHANGED THE WAY
TOYOTAS ARE SOLD AT...
TOYOTA 101



xA



Camry



Prius



xB



Highlander



**tC
Coupe**



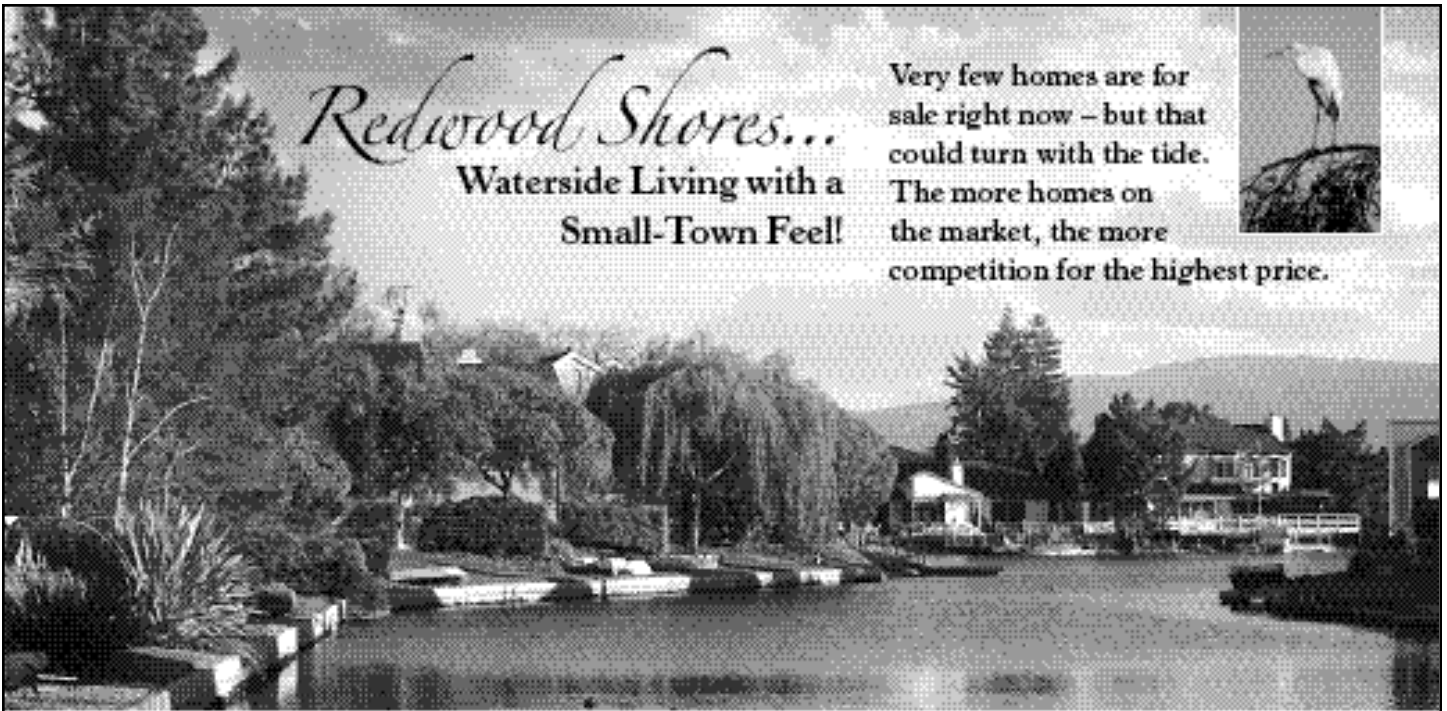
**NO Commission!
NO Pressure!
NO Mark-Ups!**

525 E. Bayshore Rd.
Redwood City

1.877.568.3869

www.scion101.com

www.toyota101.com



Redwood Shores...
**Waterside Living with a
 Small-Town Feel!**

Very few homes are for sale right now – but that could turn with the tide. The more homes on the market, the more competition for the highest price.



If you're thinking of selling your home, call me. I know your neighborhood and I know the market. Take advantage of this Seller's Market! **Take the Aknin Advantage!**

Gail Aknin

650.403.1220
 gail@GailAknin.com
 www.GailAknin.com



**Enhance Your Purchasing Power
 5/1 Relationship ARM**

With the 5/1 Relationship Adjustable Rate Mortgage (ARM)[®], today's historically low home loan interest rates may be reduced even further by establishing a new or maintaining an existing banking relationship with Wells Fargo.^{**}

- Low Introductory Rate – May help you qualify for a larger purchase
- Low Down Payments – Up to 100% financing available
- Larger Loans – Financing up to \$3 million
- Greater Home Affordability – Interest-only payment option for qualified applicants
- Convenience – Have your entire financial relationship with one network of experts

Call today for a complimentary consultation.

GEETA SADARANGANI
 650-315-8051 Cell

geetasadarangi@wellsfargo.com

VIVIEN LI

650-558-5405 Direct

vivien.w.li@wellsfargo.com

1440 Chapin Avenue #205

Burlingame, CA

650-558-5400



*Due to daily pricing variations between products, please work with your Wells Fargo Home Mortgage consultant to determine that the pricing available on the Relationship ARM Program is the most advantageous priced home financing solution for you.

**Low introductory rate is fixed for the first 5 years of your loan provided you maintain the minimum banking relationship requirements.

Wells Fargo Home Mortgage is a division of Wells Fargo Bank, N.A.

© 2004 Wells Fargo Bank, N.A. All Rights Reserved #19251 9/04



**Quality Tender Loving Care
 For Your Pet Pals & Home
 While You're Away!**

Daily Dog Walks, Pet Exercise, Feed,
 Medicate (if required), Pet Taxi
 Home Security, Plant Care
 Special Requests Welcome
 Bonded & Insured, References Available

Dawn Hoover

Tel: 650 571-0360

Pager: 650 525-5642

dawnhoover@apetsbestfriend.net

www.apetsbestfriend.net



**A Pet's
 Best Friend**

We'll sit, walk, & care when you can't



"Inspired Instruction with success in reaching the best potential in young students to accomplished musicians"

Piano Lessons!!

Concert Pianist **Sujeeva Hapugalle** teaches piano students at all levels from her studio in Redwood Shores. She is now available for regular music lessons, Master Classes coaching for concerts, competitions and MTAC (US) / ABRSM (UK) examinations.

"Works to create a well rounded musician by developing performance perfection with an understanding of the joy and meaning of a wide repertoire of music"

Sujeeva Hapugalle is an accomplished pianist with performances as Solo Recitalist, Concerto Artist and Lecture Recitalist to critical acclaim. Recent concert engagements in the US, Europe, Japan, Hong Kong South Asia & Australia. She is listed in the prestigious International roster of Steinway Concert Artists

Sujeeva studied as a scholar of the Royal College of Music in London and is the recipient of Major Awards at National and International piano Competitions in the United Kingdom.

In addition to her private teaching practice Sujeeva conducts Master Classes in the US and overseas through Steinway & Sons and other Musical Institutions.

- Graduate of The Royal College of Music, London
Associate RCM, Dip RCM (Performer), Master of Music - RCM
Fellow of the Trinity College of Music, London
(Scholar of the Royal College of Music - London and Associate Board of the Royal Schools of Music, UK)
- Festival / Competition Adjudicator and Examiner
- European Piano Teachers Association (EPTA)
- Music Teacher's Association of California (MTAC)

STEINWAY & SONS

Sujeeva Hapugalle
Piano Studio

Phone : 650. 508. 9583
eMail : sujeevahapugalle@hotmail.com

Aches, pains, cough & fever.

Sequoia Medical Group.

Modern medicine. Personal service.



We're here for you when you need us.
Please call **650.596.7000** for an appointment.



Sequoia Medical Group
A service of CHW Medical Foundation
sequoiamedicalgroup.org

COLDWELL BANKER
NORTHERN CALIFORNIA



**SOPHISTICATED, RESORT STYLE
LIVING PELICAN COVE,
REDWOOD SHORES**

Lush landscaping surrounds this bright condo with 2 bdms/2Ba/2 Decks/fireplace in LR/ new kitchen/new Pergo floors, 2 pools, boat dock, spa & more all well maintained - makes this a favorite! Come see us and make your dreams come true.

**Offered @ \$668,500.
OPEN WEEK-ENDS,
1:00-4:00 PM.**



Carol Wilkinson
Realtor
Home Marketing Specialist

**Cell:
(650) 670-7117
Voice Mail:
599-2004**

**E-Mail:
Carol.Wilkinson@cbnorcal.com**

SBSA SAVES MILLIONS OF DOLLARS THROUGH EFFICIENCY, & INNOVATIVE PROGRAMS - Energy

saving ideas have been part of the SBSA approach since the design of the plant. The Fixed Film Reactor Biological treatment system was added to the original design in the late 70's before the plant opened, to lower the overall cost of treatment during the first energy crisis. In 1986, SBSA began accepting restaurant grease trap as part of a first-in-the-nation pilot program to see if this waste could be digested in the anaerobic digesters. In 2006 SBSA installed a heat recovery program that will greatly reduce the use of gas fired boilers to heat the digesters by using the waste heat off of the co-generation unit. The left over gas can now be used to produce even more energy for more savings. The energy conservation program uses many techniques including but not limited to, shifting discretionary operations away from high cost peak power times and installation of premium efficiency motors. These are only a few of the programs installed.



More next month of cost saving ideas.

241 Monaco Drive



RWS Waterfront home w/ boat dock
In Harbor Court
 3 bedrooms + hall office, 2.5 ba, 2 car garage with storage cabinets
 Recent \$50K+ upgrades
 Totally remodeled master bath room.
 Gleaming wood floors, plantation shutter, closet organizer, stainless steel refrigerator, washer/dryer, alarm.
 New carpet, new exterior paint, super master w/ 2 closets
 Sunny waterfront backyard
Asking
\$ 1,375,000

SOLD



923 Corriente Pointe, RWS
 4 bedrooms + loft, 3 baths
 Waterfront. 2855 sq ft Remodeled
Sold @ \$1,435,000



511 Lichen Lane, RWS
 5 bedrooms, 3 baths
 Gossamer cove 2710sf
 Sold in 7 days w/ 7 offers
SOLD @ \$1,265,000



ANNA OW
 650-740-8449 call
aowrealtor@aol.com
www.annaow.com

If you are thinking about selling in 2007, please give me a call for a confidential meeting

THE DREAM OF SCHOOL FORCE



School-Force!

Our dream is simple - to provide the children in the Belmont-Redwood Shores School District with a full spectrum of high quality educational programs which will ensure they are completely prepared to pursue their own dreams.

With your financial support, School-Force is able to provide consistent funding towards these programs and teachers at the six elementary schools and the middle school in the district:

- Instrumental Music Teachers
Matt Powell & Owen Bruce
- Science Specialists
Brad Schleder & Bill McClurg
- Library Technicians
Patty Branscum, Karen Cutter, Celia Forrest, Maggie King, Sienna Sydlaske & Claudia Sarconi
- Reading Specialists
Robin Reding, Phyllis Endow, Helen Kauffold, Stephanie McMaster & Aileen Anderson
- Teacher training for new writing program

• IT/Space Design Program at Ralston (one-time grant)
 Your support enriches our schools every day of the year!

“School-Force has been a godsend for this district. Without the support of the foundation, our music program would not be at the level that it is today. The impact that School-Force has made our students; beginning in the elementary schools has been the difference between mediocre and outstanding.”



The suggested family donation is \$333 per family! (This is less than \$28 per month) Let's raise \$400,000 this year to accomplish even more!

Donating to School-Force just got easier! Make this important donation online at: www.schoolforce.org



“Geez! The glare through this window is awful. I must call Jean Cary for some professional advice about window coverings.”



- Remodeling Ideas
- Fabric, Furniture, Flooring

Sensible decorating for the way you live

Save up to \$250 on Hunter Douglas Silhouette Shades this Spring

Get a design plan for your entire house for only \$300

SELECTING THE CORRECT WINDOW COVERING

Of all the design elements in a home, window coverings have the strongest impact on a room and should be designed early in the process of decorating a space. In an aesthetic sense window treatments convey the style of the room (e.g., formal vs. casual) and enhance the furniture design of the room (e.g., contemporary, retro, or traditional). One of the hallmarks of architectural design over the last fifteen years is the diversity of window sizes and shapes in each home. The windows lend interest to tall lofty spaces, but covering them to prevent sun damage to carpets and furniture can present a perplexing array of problems. Windows are a source of heat transference, contributing to high heating and cooling bills. Duette™ and Silhouette™ shades can cut heat loss by 25% and reflect 60% of direct sunlight, while still allowing a view of the outdoors through the shade. Layered draperies trap air, providing a good energy shield. Consider custom draperies whose custom fit means more energy savings. Ceiling-mounted draperies and closed-top cornices keep warm room air and cold glass separated to decrease the heat transference through the window. If glare is a problem, select a window covering that has an open weave for the daytime that will soften the light coming into the room. Shutters and blinds send bright shafts of light into the room as the vanes are adjusted, never solving the glare problem unless they

are completely closed. Modern improvements in fabric durability give today’s homeowners more value for their window covering investment than ever before. Some fabrics resist static electricity and thus dust build-up. Other fabrics have permanent pleating and lifetime warranties against sun damage. The easy maintenance and prolonged durability of shades make them the most popular product choice for today’s homeowners. Retractable elastic cords, cordless shades and battery operated lift systems controlled with a remote provide safety and ease of operation like never before. In an open floor plan where you can see several rooms from one vantage point, coordinate all the window treatments with similar colors and fabrics. When there are several windows butted frame-to-frame, they should be treated as a single focal point to look their best. Unify the windows with a decorative rod or valance over the top of all the windows. In small rooms use curtains with fabric the same color as the wall to expand the space. Minimizing the amount of wall covered by fabric will also make the room seem larger. Small rooms are the best places to use window coverings mounted inside the window frame.

*Submitted by Jean Cary of Jean Cary Interiors
(650) 593-9622*



ROCKY DHALIWAL, D.M.D.
Family, Cosmetic & Implant Dentistry
278 Redwood Shores Parkway
(Next to the Nob Hill Market)
Redwood Shores
Tel (650) 654-6545 Fax (650) 654-6564
www.RedwoodcityDentistCosmeticDentist.com
New Patients Welcome

SOMETHING IN THE WATER

The dental community has long embraced fluoride, a mineral that promotes the growth of strong teeth and prevents tooth decay. So, it comes as good news that almost two out of three Americans who drink public water are now getting fluoride from the tap. Since the early 1970's when fluoride public water became widely available, dental cares among school children have fallen by more than 60%. Although some of that reduction can be attributed to better brushing habits and fluoride toothpaste, much is due to the fluoride in drinking water. At the same time, bottled water consumption has risen to nearly 20 gallons per capita annually, but only a minority of brands put fluoride into their bottled water.

Are you getting enough fluoride? Good oral healthcare is important for your overall good health. When was the last time you had a comprehensive dental examination? We make every effort to see you promptly and listen to your concerns and needs. Keeping you healthy and happy is our first concern. We will let you know about new procedures technologies and what they can for you. Please call us to schedule and appointment.

P.S. The average American drinks 3.6 servings of tap water and 1.7 servings of bottled water daily.



H H H H

H Best

H Best

H Best

H Best

Friendly
 Sparkling
 Fresh Fish

SF Chronicle

1070 Holly St. San Carlos, CA
 (650) 654-1212) Open 7 Days



39 El Camino Real San Carlos, CA
 (650) 5595-KAYA) Open 7 days
 Sat-Sun & Holidays- Dinner only

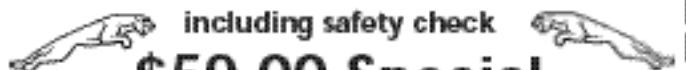
**HILLS
 MOTORS**

JAGUAR

- Jaguars require specialized knowledge and equipment
- Don't shortchange your Jaguar take it to a specialist
- Minutes from Redwood Shores
- Loaner cars or Shuttle service available
- Specializing in Jaguars since 1979

Your dealer alternative

Engine oil and Filter change



\$59.00 Special

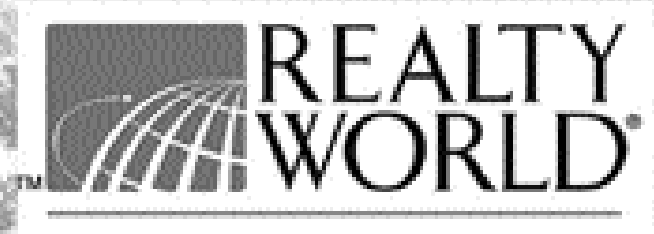
Full repairs, service and sales

Expires:
 4/30/07

HILLS MOTORS

4011 Pacific Blvd, at 42nd, San Mateo • 650-573-7425

We buy low mileage Jaguars, running or not!



MATT KOLENDA, REALTOR®
PHONE: (650) 802-7009
EMAIL: kolenda@homesellers.com
WEB: www.KolendaHomes.com

FOCUSED ON REDWOOD SHORES

Get the Facts:

- ▶ There are relatively few properties on the market in Redwood Shores (6 single family homes, 10 condominiums)*
- ▶ Interest rates are still near all time lows
- ▶ Well priced properties are getting multiple offers and many sell above their asking price
- ▶ The market is flush with buyers looking to live in The Shores

Call me today for a complimentary market analysis



2006 Realty World Sales Master Award Winner

* Data provided by REINet, Inc. MLS on 3/23/2007



EDDIE AZZOPARDI
PHONE: (650) 802-7007
EMAIL: azzopardi@homesellers.com



JUST LISTED!

207 Mendocino Way

What better way to enjoy Redwood Shores than your own home on the water with a boat dock steps away!

List Price \$848,000

**For Results in Marketing Your Redwood Shores Home
CALL EDDIE AT (650) 802-7007**